

When The Saints Go Marching In

Traditional

Oh When The Saints _____ Go March - ing

In, _____ Oh When The Saints Go

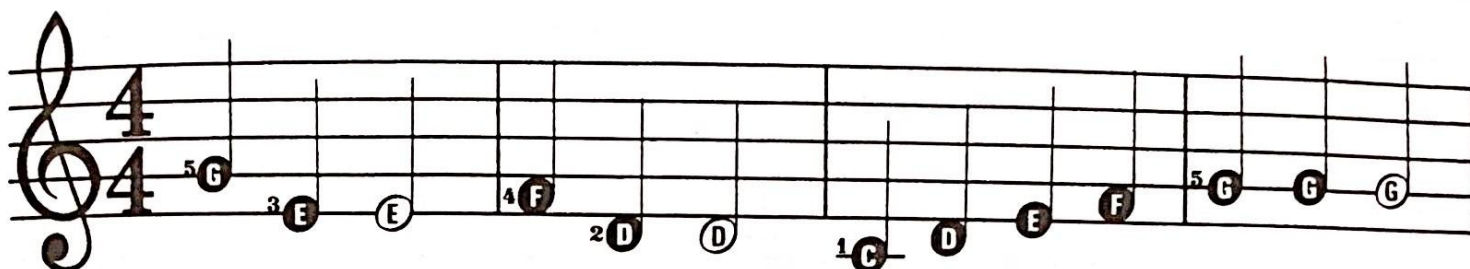
March - ing In, _____ I want to be

In that num - ber, _____ When The

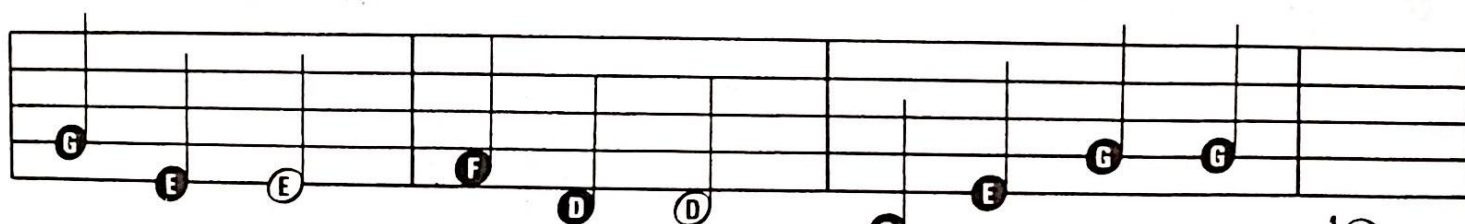
Saints Go March - ing In, _____

Lightly Row

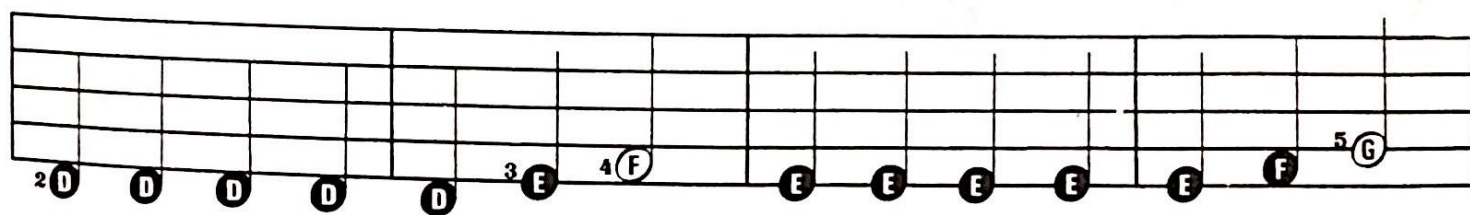
Traditional



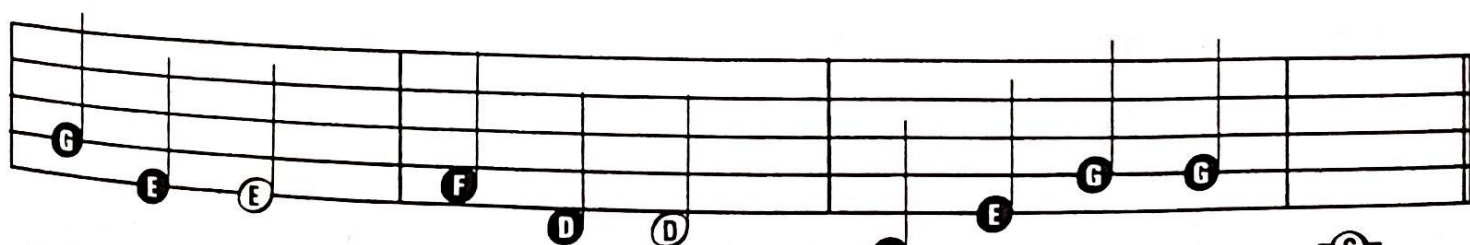
Light - ly Row, Light - ly Row, on the wat - ers Light - ly Row.



Light - ly Row, Light - ly Row, O'er the deep blue sea.



Gen - tle bree - zes whis - per low, while the shad - ows come and go.



Light - ly Row, Light - ly Row, O'er the deep blue sea.

Jingle Bells

Traditional

3 E E E E E E E G 1 C 2 D

Jin - gle Bells, Jin - gle Bells, Jin - gle all the

3 E 4 F F F F F 3 E E E

way. Oh what fun it is to ride a

E 2 D D 3 E D E E E E E E

one horse o - pen sleigh. Jin - gle Bells, Jin - gle Bells,

E 5 G 1 C D 3 E 4 F F F F

Jin - gle all the way. Oh what fun it

F 3 E E E 5 G G 4 F 2 D 1 C

is to ride a one horse o - pen sleigh.